

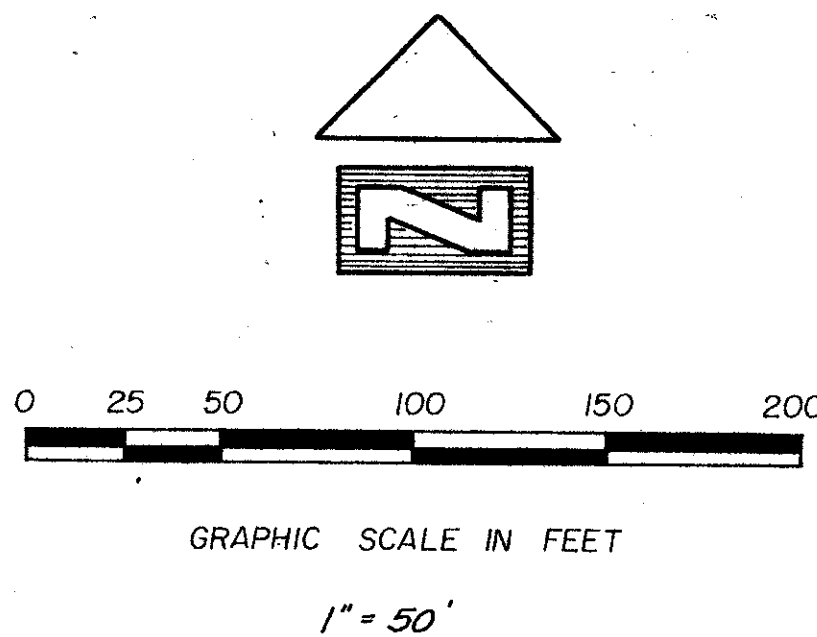
43/162

WATERBERRY

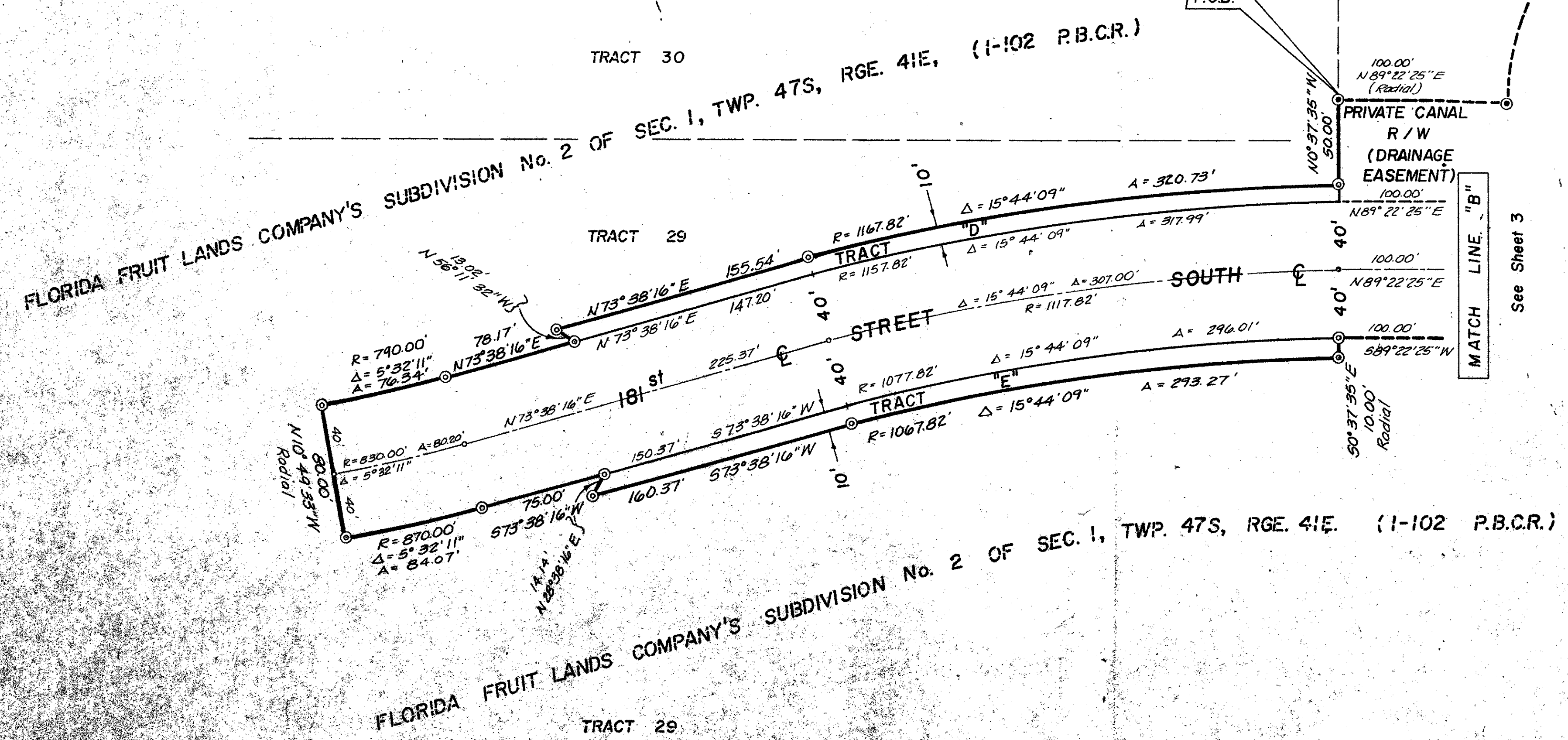
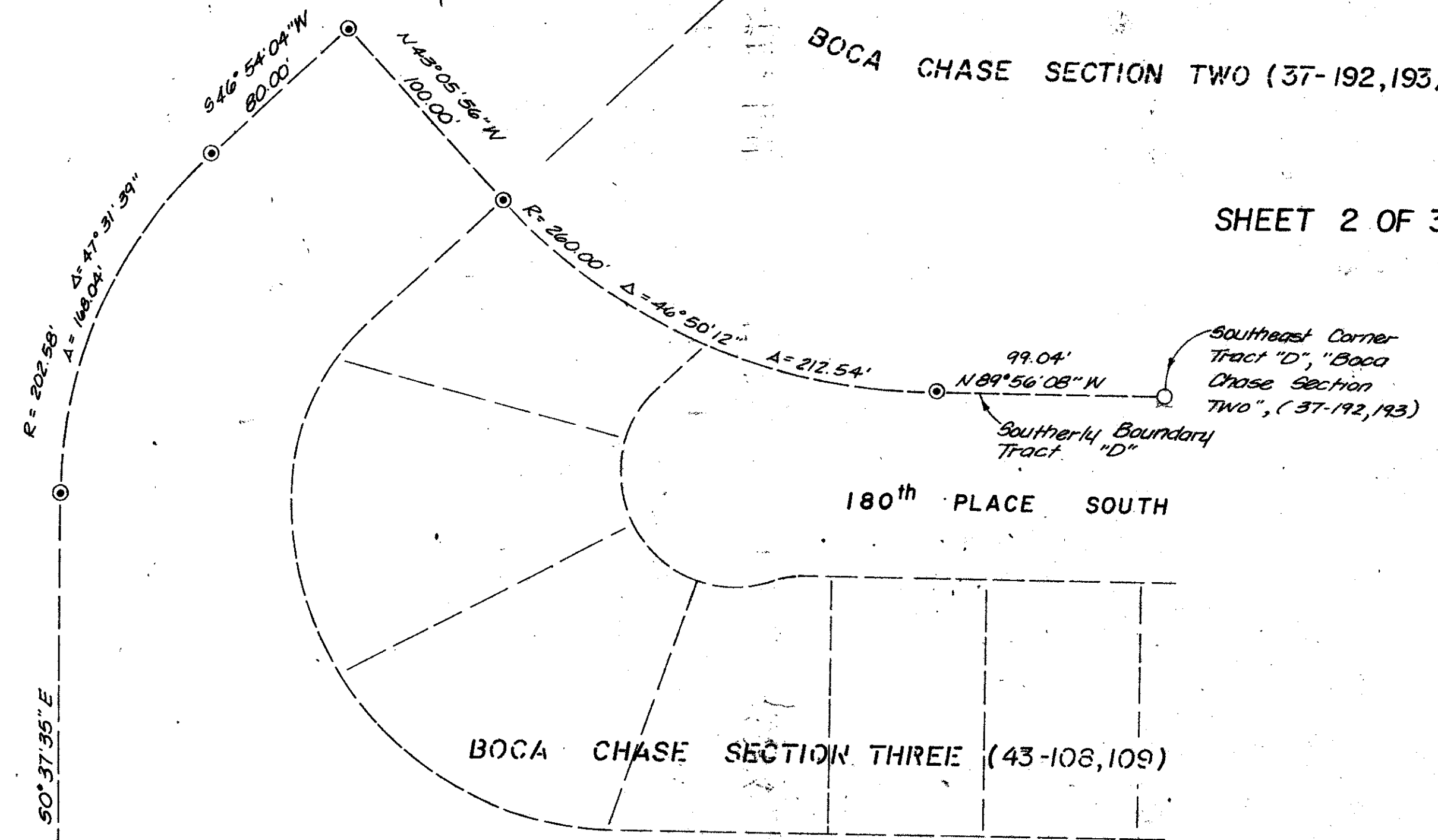
(A PORTION OF RIVIERA P.U.D.)
A REPLAT OF A PORTION OF TRACTS 12, 13, 20, 21, 29 and 30
FLORIDA FRUIT LANDS COMPANY'S SUBDIVISION No. 2 OF
SECTION 1, TOWNSHIP 47 S., RANGE 41 E. (1-102 P.B.C.R.)
PALM BEACH COUNTY, FLORIDA

162

PREPARED BY
HELLER - WEAVER and ASSOCIATES Inc.
5310 North State Road 7, Suite E
Fort Lauderdale, Florida 33319
ORDER No. 2301



SHEET 2 OF 3 SHEETS



- NOTES**
- 1) U.E. Indicates Utility Easement
 - 2) ⊙ Indicates Permanent Reference Monument (Set)
 - 3) * Indicates Permanent Control Point to be Set by this Plat.
 - 4) ⊙ Indicates Permanent Reference Monument (Found)
 - 5) Bearings shown hereon are based on the North Line of Section 1, Township 47 South, Range 41 East, having an assumed bearing of Due West as shown on Boca Chase Section Two P.B. 37 Pg. 192, 193 Palm Beach County Records.

0303-306

WATERBERRY
43/162